

Who is Powercorp?

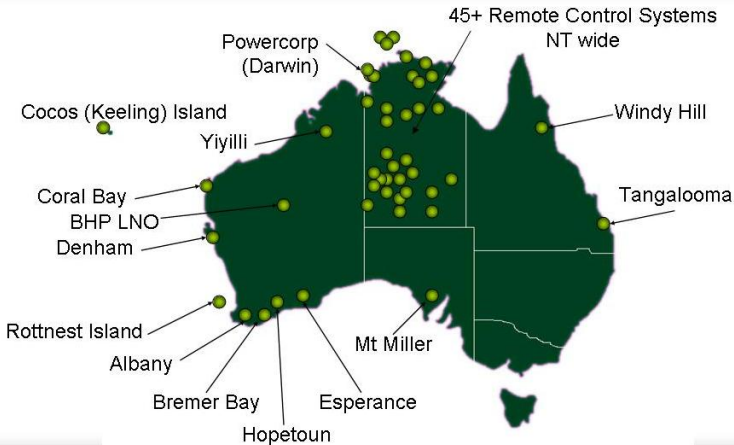
Based in the Northern Territory.



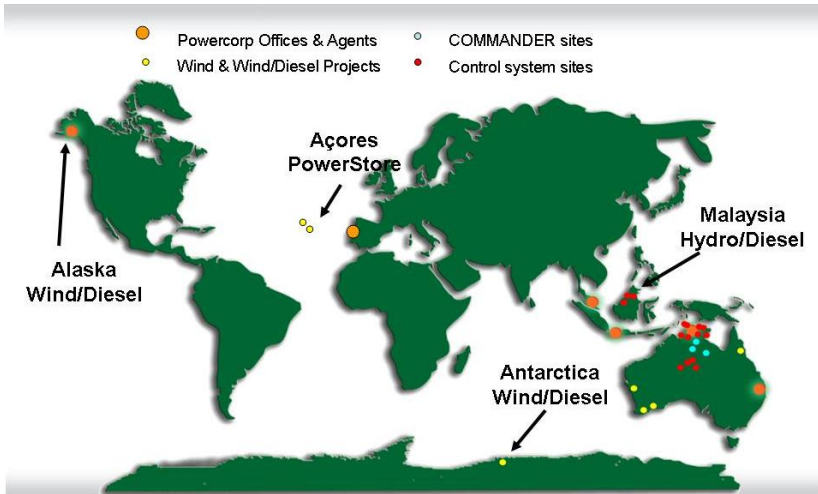
- ▶ Based in Darwin, NT.
- ▶ Building systems for isolated grids, mines, voltage support.
- ▶ Technologies:
 - ▶ Distributed Control.
 - ▶ Power Electronics.
 - ▶ Power Systems.
- ▶ Products include: Distributed controllers, Powerstore, ..



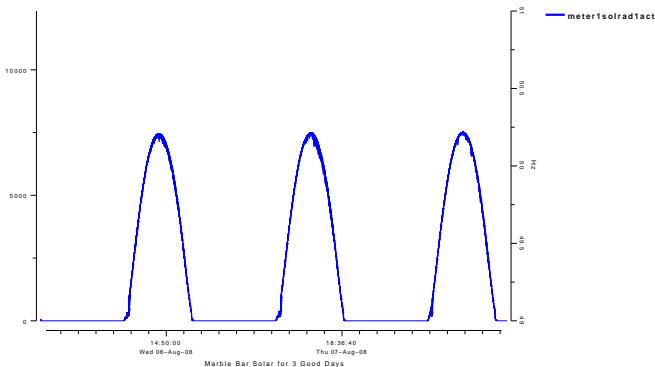
Systems within Australia



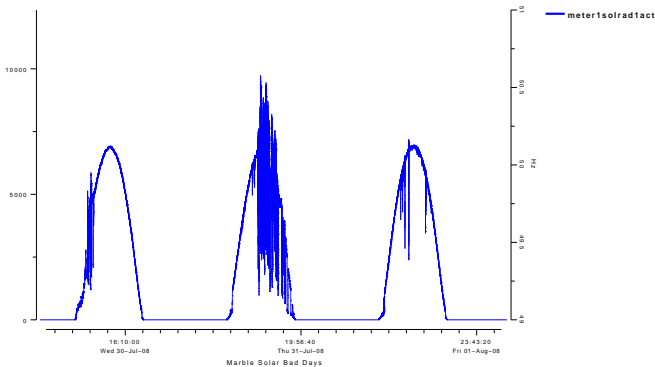
Other Systems



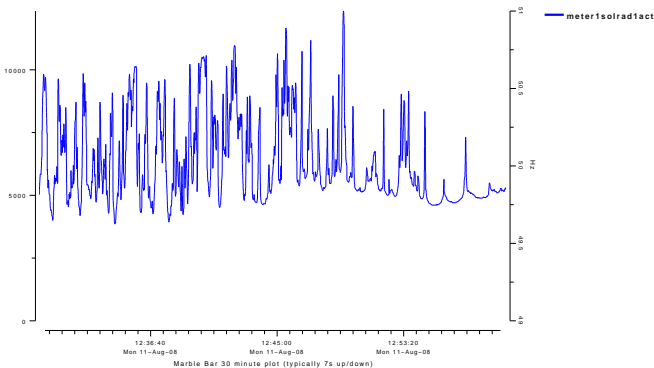
Solar Good Days



Solar Bad Days



Solar Bad Days



Wind 101

The problems:

- ▶ Wind speed varies, e.g. at Mawson from 5-12m/s within a few seconds.

Wind 101

The problems:

- ▶ Wind speed varies, e.g. at Mawson from 5-12m/s within a few seconds.
- ▶ Power varies as s^3 , twice as fast means eight times as much power.

Wind 101

The problems:

- ▶ Wind speed varies, e.g. at Mawson from 5-12m/s within a few seconds.
- ▶ Power varies as s^3 , twice as fast means eight times as much power.
- ▶ Power produced MUST equal power used!!

The answers:

- ▶ Install less Wind Power.

Wind 101

The problems:

- ▶ Wind speed varies, e.g. at Mawson from 5-12m/s within a few seconds.
- ▶ Power varies as s^3 , twice as fast means eight times as much power.
- ▶ Power produced MUST equal power used!!

The answers:

- ▶ Install less Wind Power.
- ▶ Limit the Wind Power Output by pitching, etc.

Wind 101

The problems:

- ▶ Wind speed varies, e.g. at Mawson from 5-12m/s within a few seconds.
- ▶ Power varies as s^3 , twice as fast means eight times as much power.
- ▶ Power produced MUST equal power used!!

The answers:

- ▶ Install less Wind Power.
- ▶ Limit the Wind Power Output by pitching, etc.
- ▶ Dump the excess power.

Wind 101

The problems:

- ▶ Wind speed varies, e.g. at Mawson from 5-12m/s within a few seconds.
- ▶ Power varies as s^3 , twice as fast means eight times as much power.
- ▶ Power produced MUST equal power used!!

The answers:

- ▶ Install less Wind Power.
- ▶ Limit the Wind Power Output by pitching, etc.
- ▶ Dump the excess power.
- ▶ Store the excess power.

Wind 101

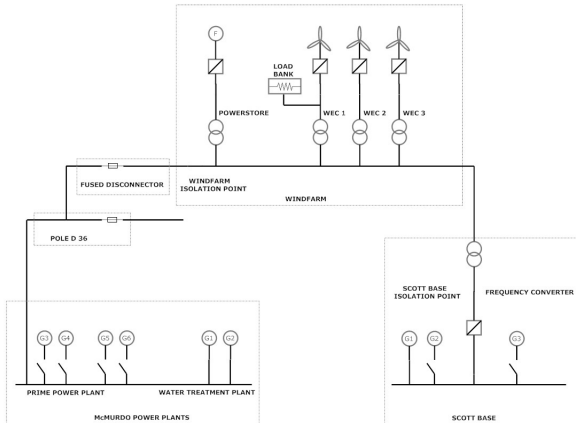
The problems:

- ▶ Wind speed varies, e.g. at Mawson from 5-12m/s within a few seconds.
- ▶ Power varies as s^3 , twice as fast means eight times as much power.
- ▶ Power produced MUST equal power used!!

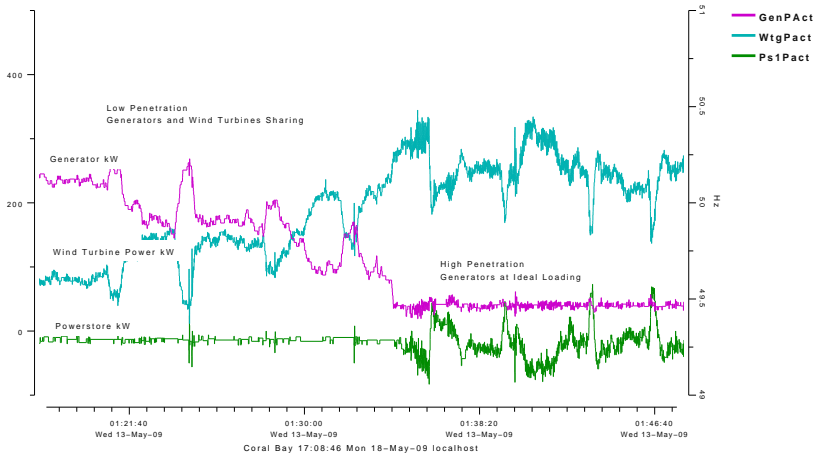
The answers:

- ▶ Install less Wind Power.
- ▶ Limit the Wind Power Output by pitching, etc.
- ▶ Dump the excess power.
- ▶ Store the excess power.
- ▶ Use the excess power when you have it!

RIWE Overview



Coral Bay Performance



The future?

- More wind on Ross Island.

The future?

- ▶ More wind on Ross Island.
- ▶ More load control.

